



Esamo transporto srauto
 Silo g. akustinio triuksmo
 sklaidos matematinio
 modeliavimo rezultatu
 schema (Ldiena)

Ribine verte
 pagal HN 33:2011
 Ldiena = 65 dBA

- > 35.0 dB
- > 40.0 dB
- > 45.0 dB
- > 50.0 dB
- > 55.0 dB
- > 60.0 dB
- > 65.0 dB
- > 70.0 dB
- > 75.0 dB
- > 80.0 dB
- > 85.0 dB

Ruta Gadisauškaite
 UAB Nomine Consult
 J. Tumo-Vaizganto g. 8-1
 LT-01108, Vilnius, Lietuva



Esamo transporto srauto
Silo g. akustinio triuksmo
sklaidos matematinio
modeliavimo rezultatu
schema (Lvakaras)

Ribine verte
pagal HN 33:2011
Lvakaras = 60 dBA

- > 35.0 dB
- > 40.0 dB
- > 45.0 dB
- > 50.0 dB
- > 55.0 dB
- > 60.0 dB
- > 65.0 dB
- > 70.0 dB
- > 75.0 dB
- > 80.0 dB
- > 85.0 dB

Ruta Gadisauškaite

UAB Nomine Consult
J. Tumo-Vaizganto g. 8-1
LT-01108, Vilnius, Lietuva

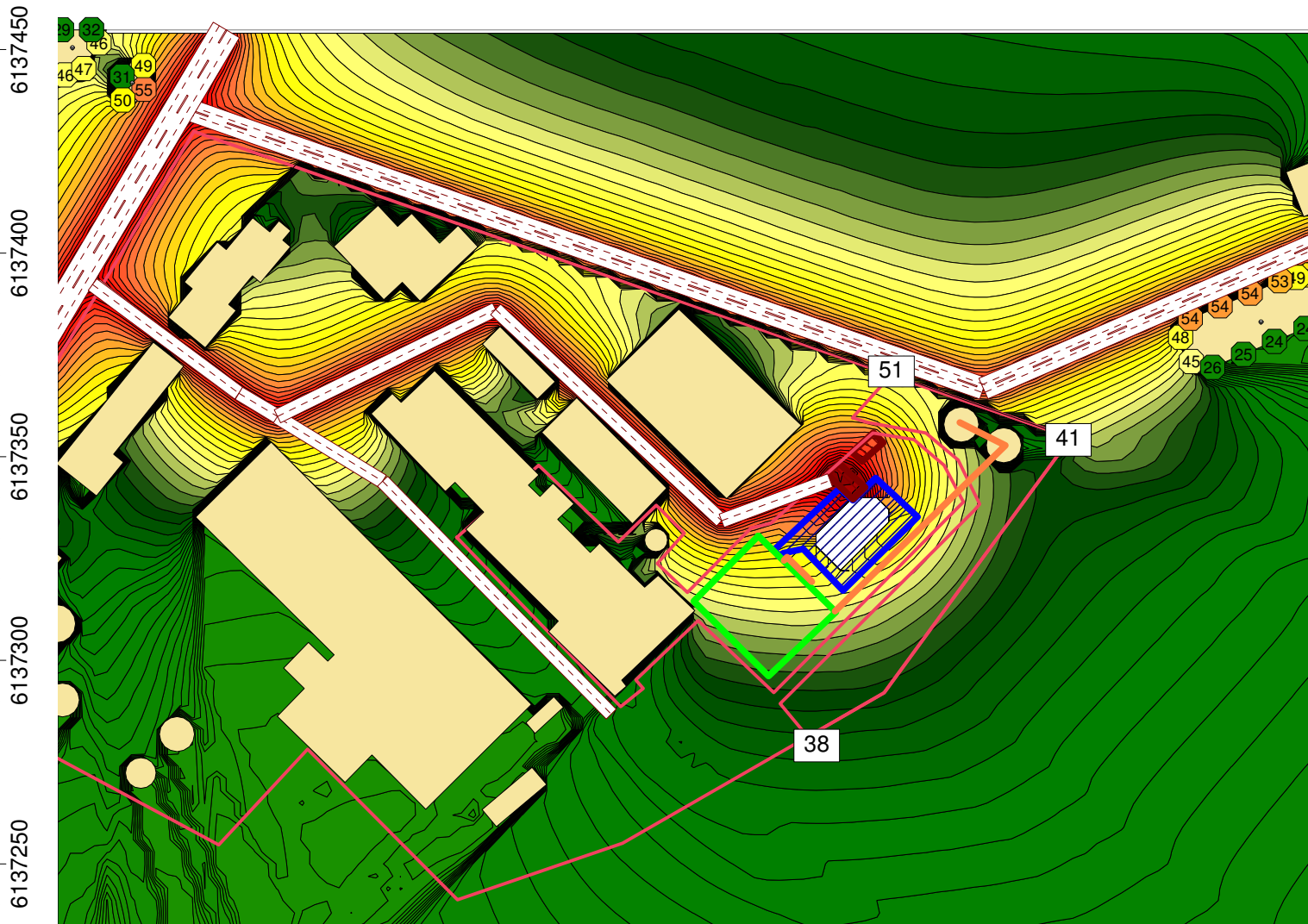
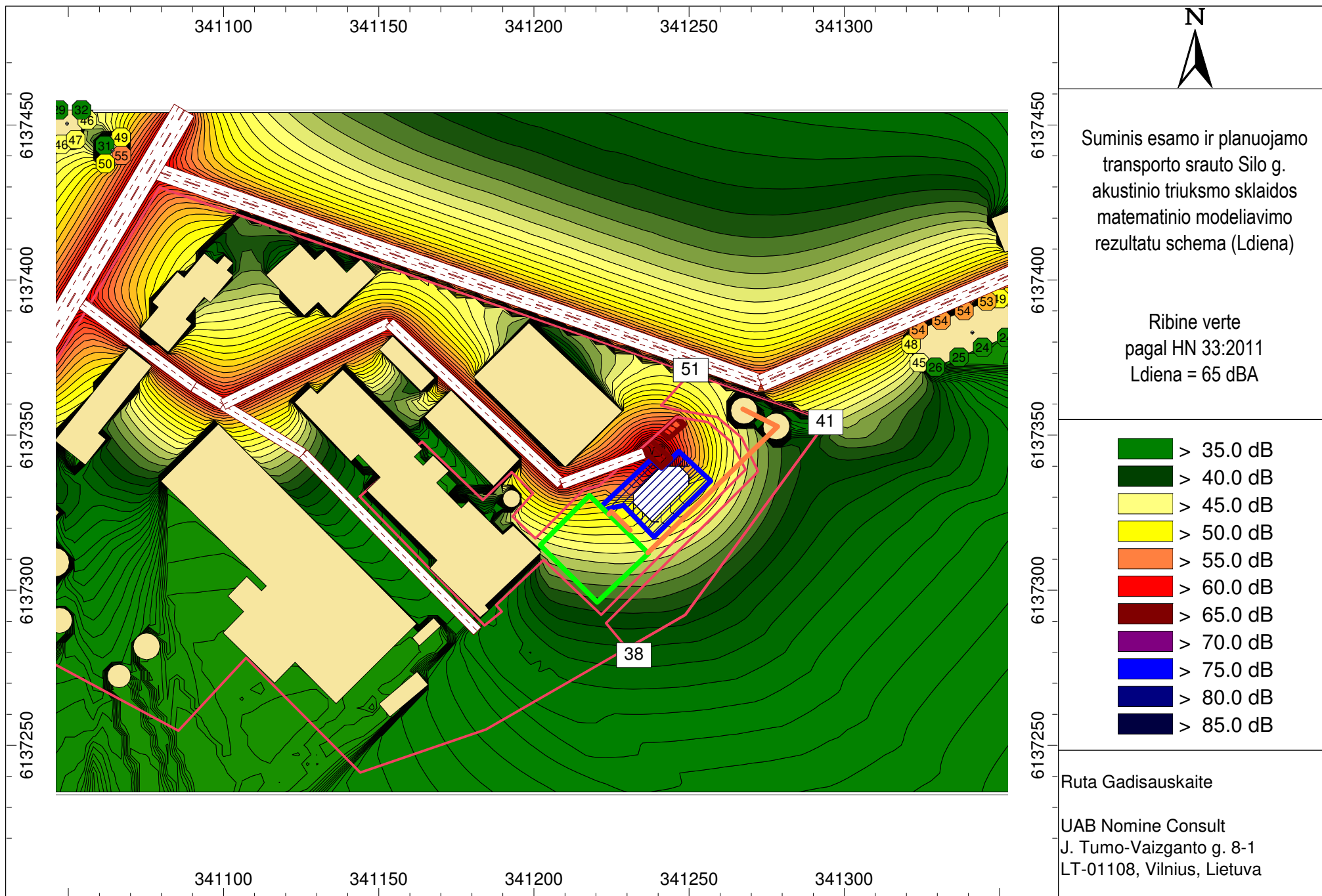


Esamo transporto srauto
Silo g. akustinio triuksmo
sklaidos matematinio
modeliavimo rezultatu
schema (Lnaktis)

Ribine verte
pagal HN 33:2011
Lnaktis = 55 dBA

- > 35.0 dB
- > 40.0 dB
- > 45.0 dB
- > 50.0 dB
- > 55.0 dB
- > 60.0 dB
- > 65.0 dB
- > 70.0 dB
- > 75.0 dB
- > 80.0 dB
- > 85.0 dB

Ruta Gadisaukaite
UAB Nomine Consult
J. Tumo-Vaizganto g. 8-1
LT-01108, Vilnius, Lietuva



6137450
6137400
6137350
6137300
6137250

341100 341150 341200 341250 341300

341100 341150 341200 341250 341300

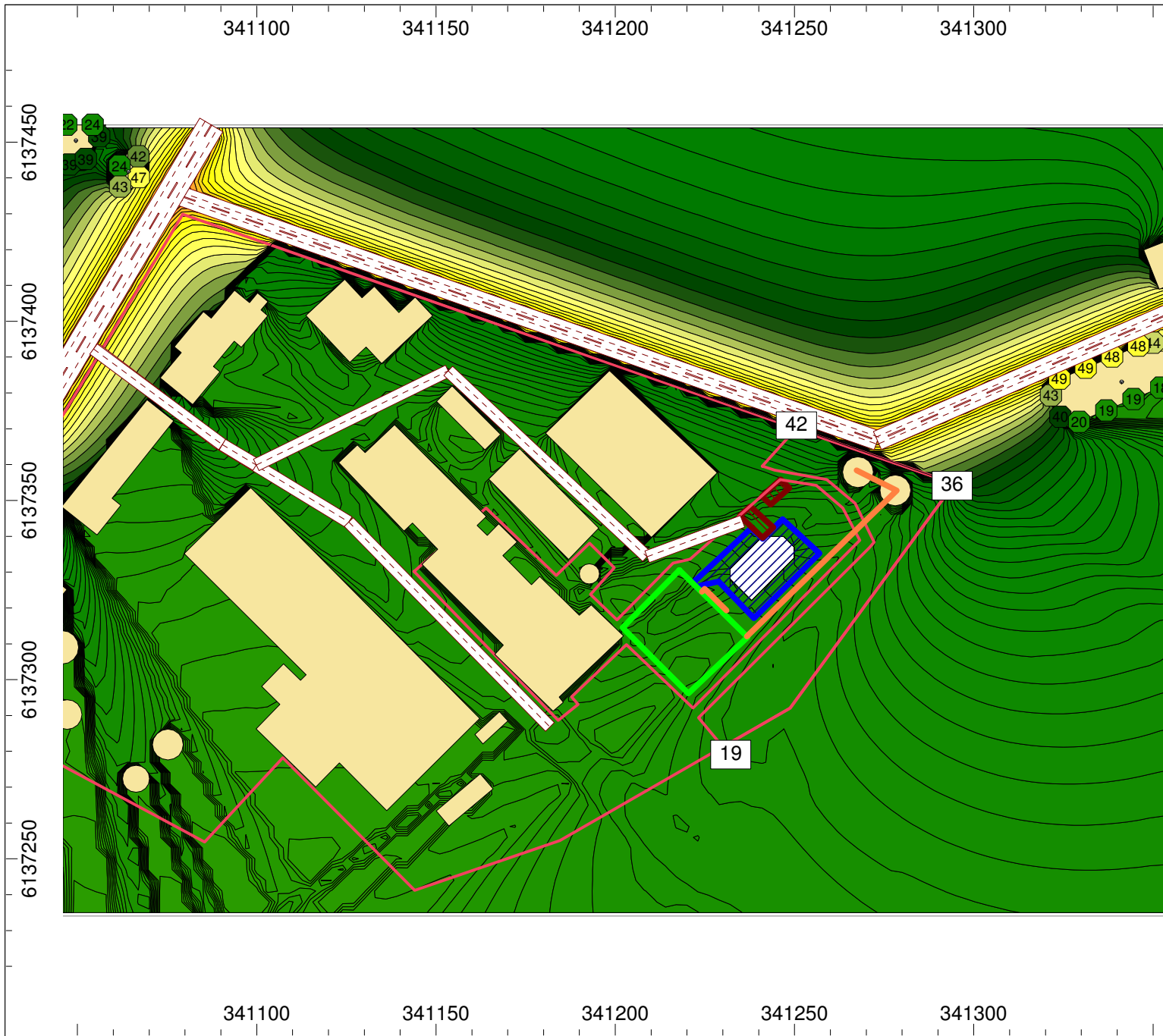


Suminis esamo ir planuojamo
transporto srauto Silo g.
akustinio triuksmo sklaidos
matematinio modeliavimo
rezultatu schema (Lvakaras)

Ribine verte
pagal HN 33:2011
Lvakaras = 60 dBA

- > 35.0 dB
- > 40.0 dB
- > 45.0 dB
- > 50.0 dB
- > 55.0 dB
- > 60.0 dB
- > 65.0 dB
- > 70.0 dB
- > 75.0 dB
- > 80.0 dB
- > 85.0 dB

Ruta Gadisaukaite
UAB Nomine Consult
J. Tumo-Vaizganto g. 8-1
LT-01108, Vilnius, Lietuva

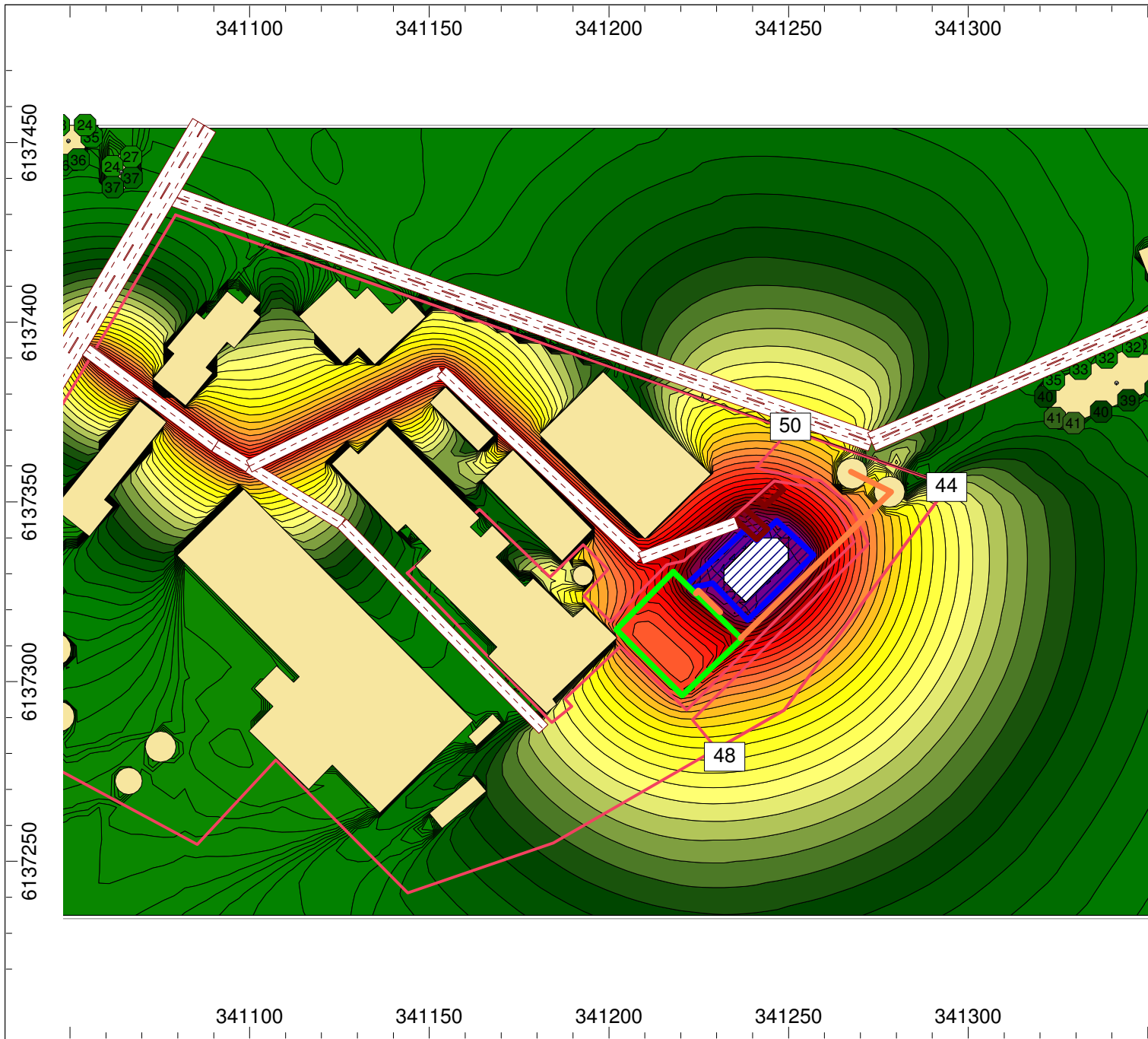


Suminis esamo ir planuojamo
transporto srauto Silo g.
akustinio triuksmo sklaidos
matematinio modeliavimo
rezultatu schema (Lnaktis)

Ribine verte
pagal HN 33:2011
Lnaktis = 55 dBA

- > 35.0 dB
- > 40.0 dB
- > 45.0 dB
- > 50.0 dB
- > 55.0 dB
- > 60.0 dB
- > 65.0 dB
- > 70.0 dB
- > 75.0 dB
- > 80.0 dB
- > 85.0 dB

Ruta Gadisaukaite
UAB Nomine Consult
J. Tumo-Vaizganto g. 8-1
LT-01108, Vilnius, Lietuva



N

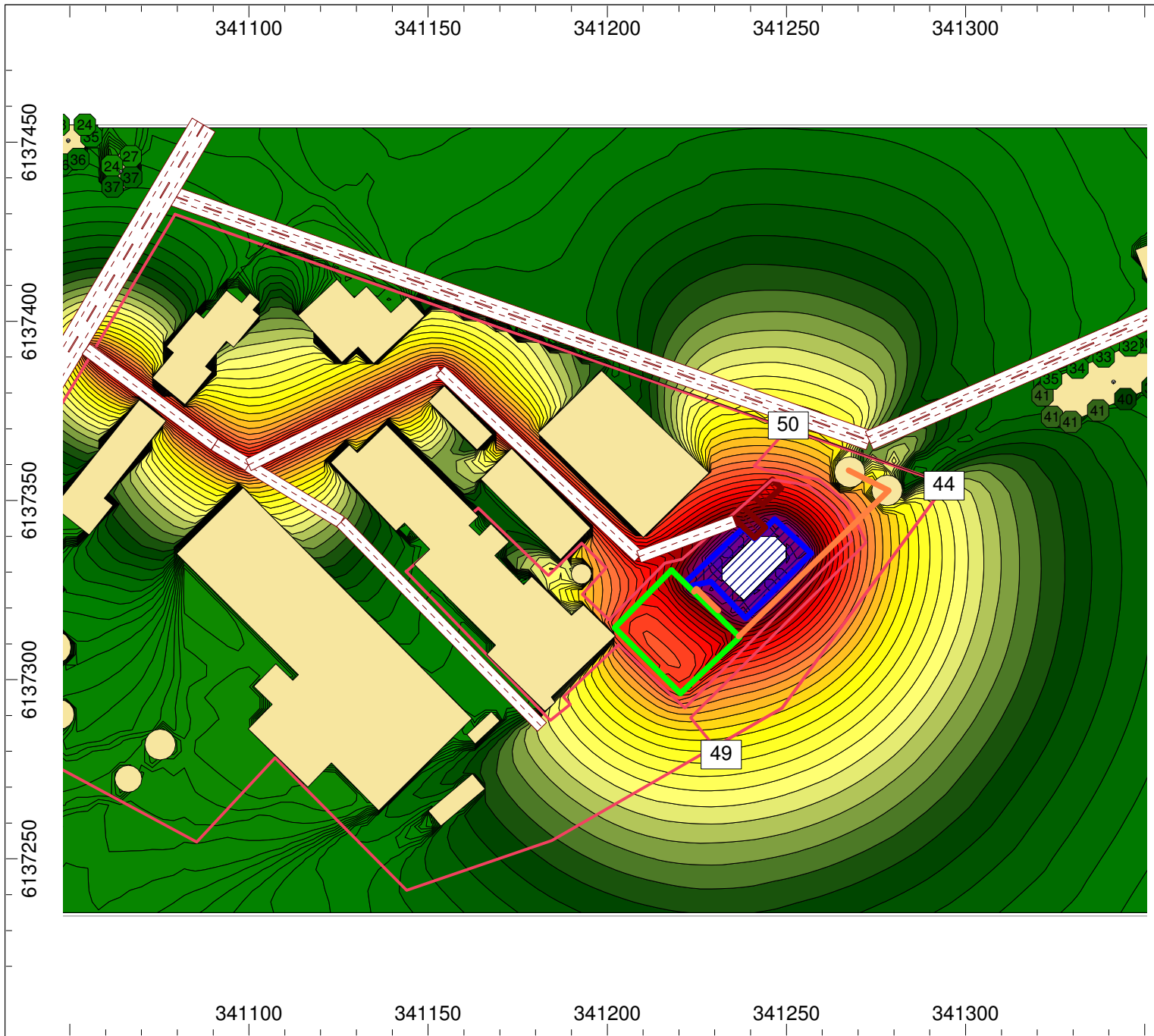
Stacionariu triuksmo saltiniu
(technologine iranga,
parkavimo aiksteles) akustinio
triuksmo sklaidos matematinio
modeliavimo rezultatu schema
(Ldiena)

Ribine verte
pagal HN 33:2011
Ldiena = 55 dBA

	> 35.0 dB
	> 40.0 dB
	> 45.0 dB
	> 50.0 dB
	> 55.0 dB
	> 60.0 dB
	> 65.0 dB
	> 70.0 dB
	> 75.0 dB
	> 80.0 dB
	> 85.0 dB

Ruta Gadisaukaite

UAB Nomine Consult
J. Tumo-Vaizganto g. 8-1
LT-01108, Vilnius, Lietuva



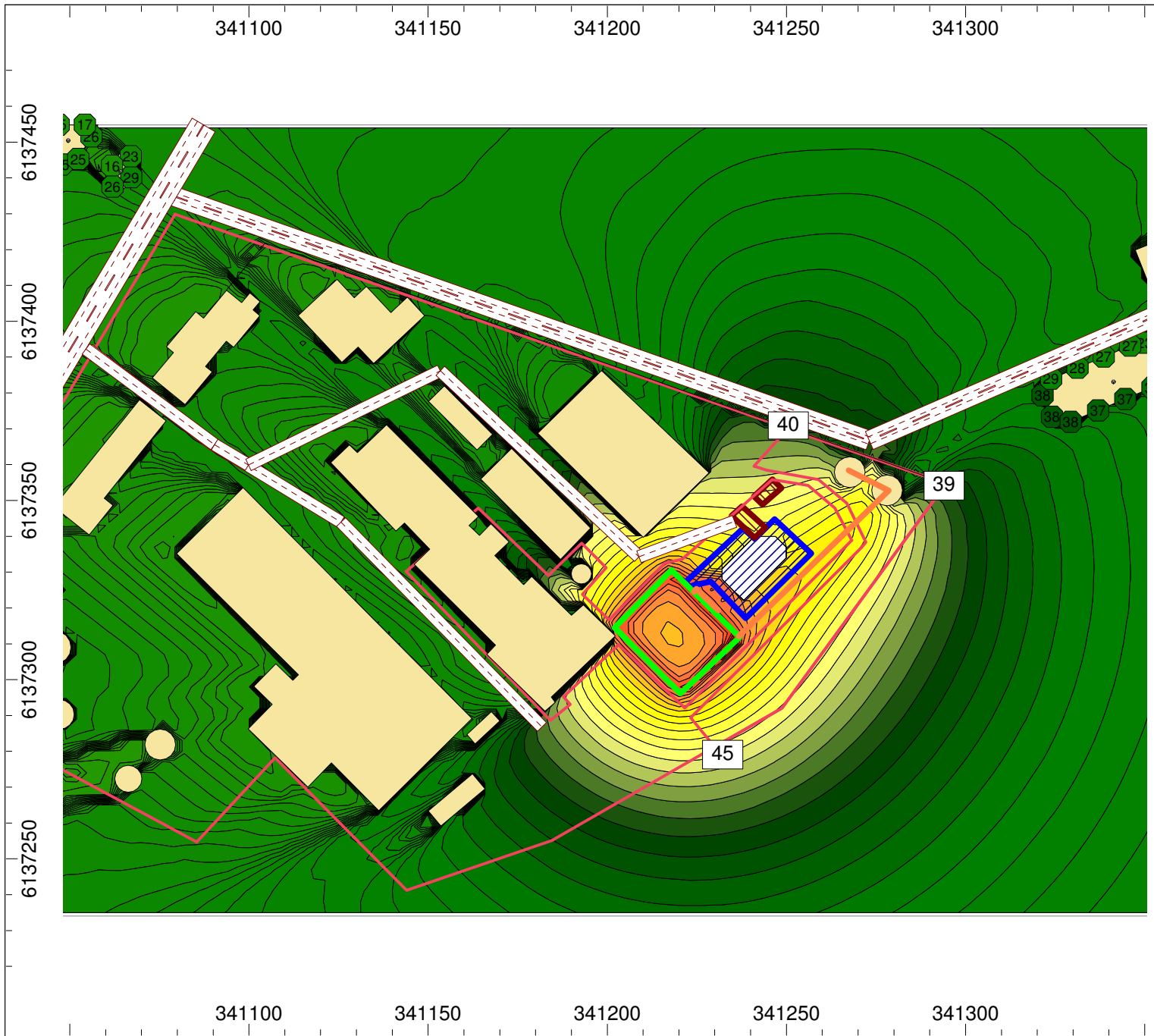
Stacionariu triuksmo saltiniu
(technologine iranga,
parkavimo aiksteles) akustinio
triuksmo sklaidos matematinio
modeliavimo rezultatu schema
(Lvakaras)

Ribine verte
pagal HN 33:2011
Lvakaras = 50 dBA

- > 35.0 dB
- > 40.0 dB
- > 45.0 dB
- > 50.0 dB
- > 55.0 dB
- > 60.0 dB
- > 65.0 dB
- > 70.0 dB
- > 75.0 dB
- > 80.0 dB
- > 85.0 dB

Ruta Gadisaukaite

UAB Nomine Consult
J. Tumo-Vaizganto g. 8-1
LT-01108, Vilnius, Lietuva



Stacionariu triuksmo saltiniu
(technologine iranga,
parkavimo aiksteles) akustinio
triuksmo sklaidos matematinio
modeliavimo rezultatu schema
(Lnaktis)

Ribine verte
pagal HN 33:2011
Lnaktis = 45 dBA

- > 35.0 dB
- > 40.0 dB
- > 45.0 dB
- > 50.0 dB
- > 55.0 dB
- > 60.0 dB
- > 65.0 dB
- > 70.0 dB
- > 75.0 dB
- > 80.0 dB
- > 85.0 dB

Ruta Gadisaukaite

UAB Nomine Consult
J. Tumo-Vaizganto g. 8-1
LT-01108, Vilnius, Lietuva